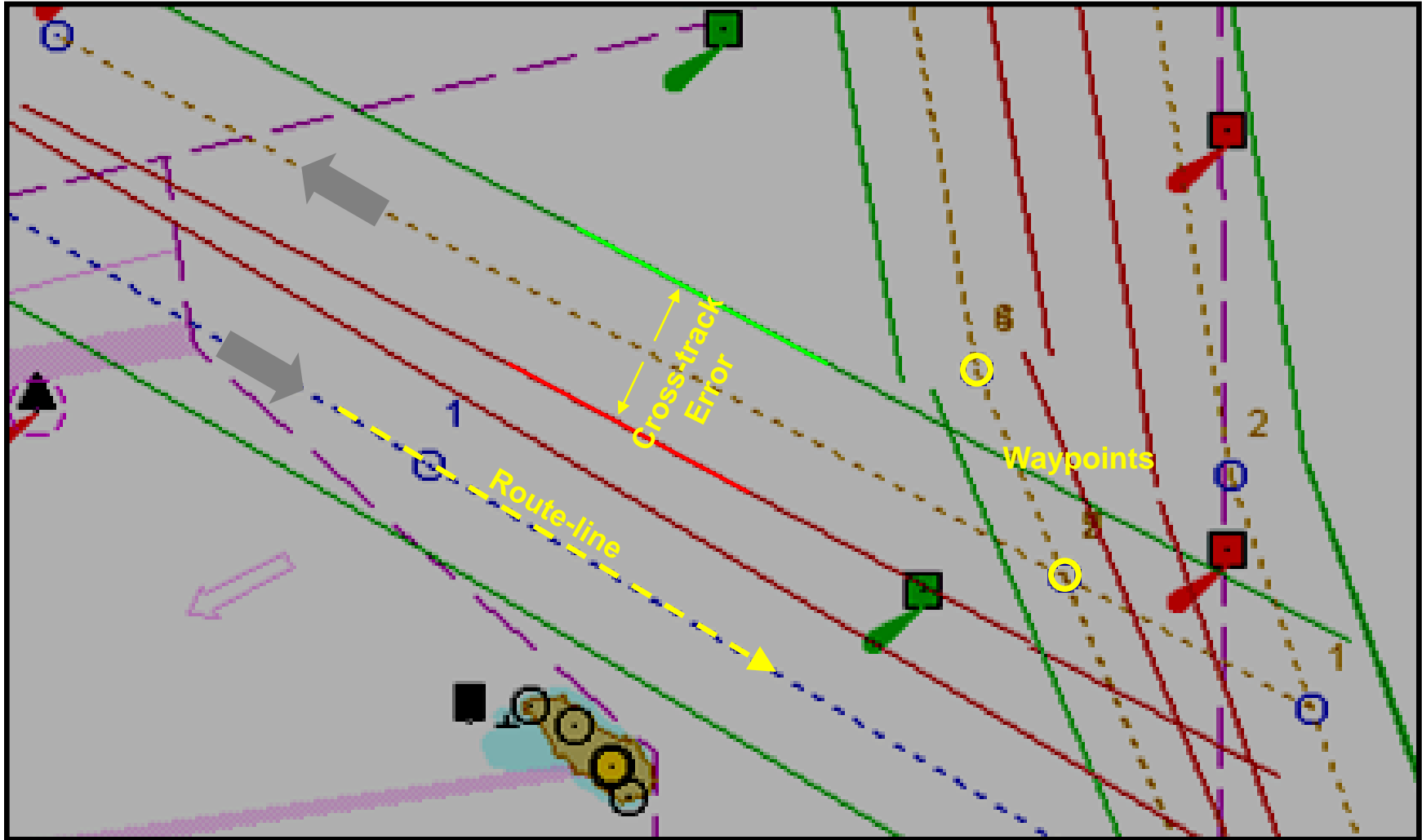


Ferry Traffic Routing Protocol

San Francisco Bay Region

- Overview** The San Francisco Harbor Safety Committee (HSC) established a traffic routing protocol for ferries in San Francisco Bay Region. The protocol includes ferry routes in Central Bay, San Pablo Bay, and South San Francisco Bay, and a safe maneuvering zone around the San Francisco Ferry Terminal (Ferry Building).
- Compliance** Compliance with these routes by ferryboats is voluntary but strongly recommended. Failure to follow the routes may result in a additional voice reporting for ferryboats.
- Mariners are cautioned that ferries operating in San Francisco Bay Region may depart from the routes for navigation safety. Mariners should always keep a close lookout.
- Learning More** These ferry routes are charted on paper and electronic nautical charts. Waypoints and other details can be downloaded from the Marine Exchange website (www.sfmex.org).
- Diagrams** The following pages show diagrams of the routes. These diagrams include details that might not be plotted on nautical charts.
- Recreational vessels, pay special attention to areas marked “Caution – Avoid” and “Stay Clear.”

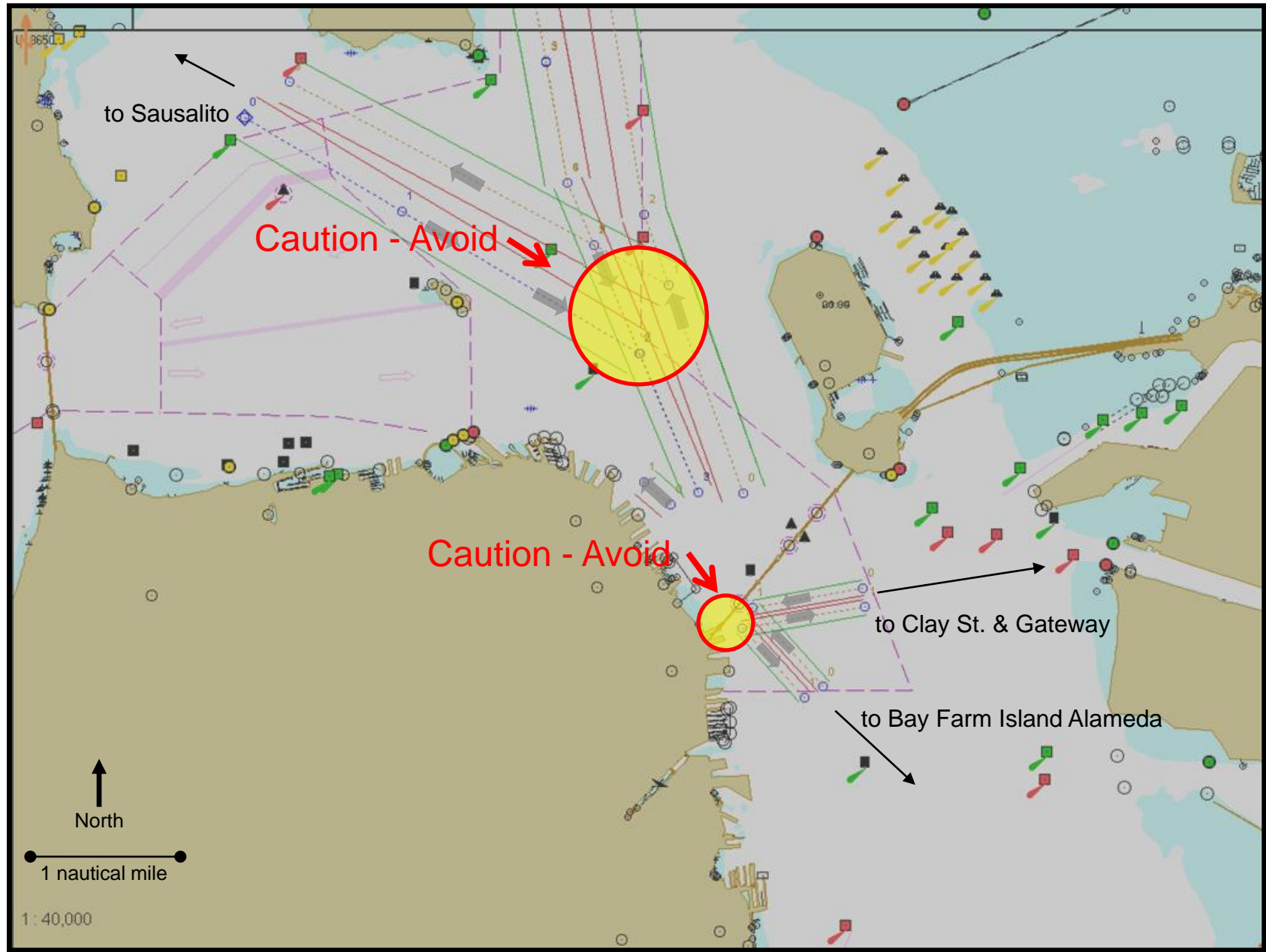
Diagram Key



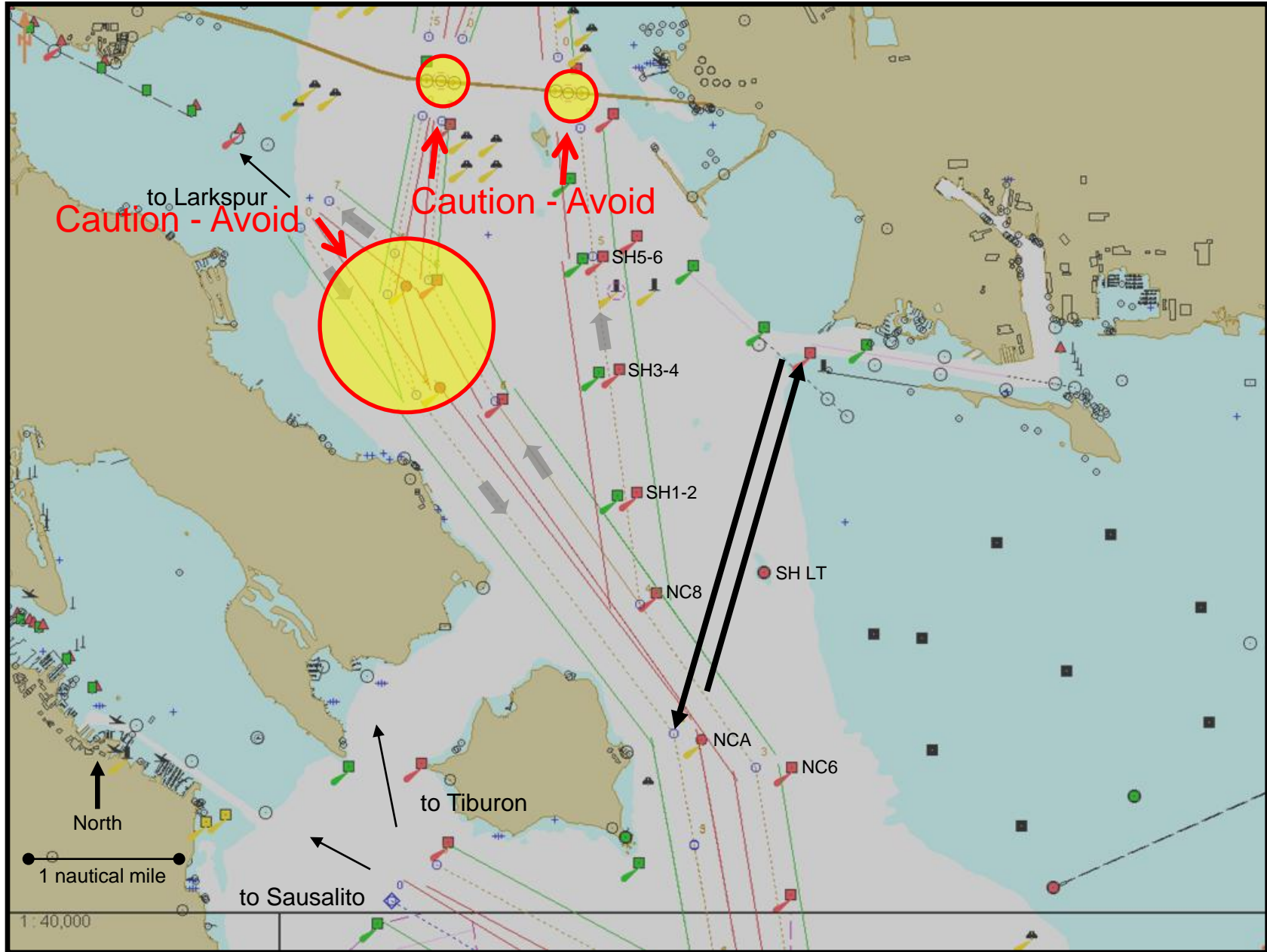
The following chart features are highlighted above.

- Route-line: Centerline of the ferry route.
- Cross-track Error: Left and right of route-line tolerance.
- Waypoints: Turns, route crossing points, and communications points.

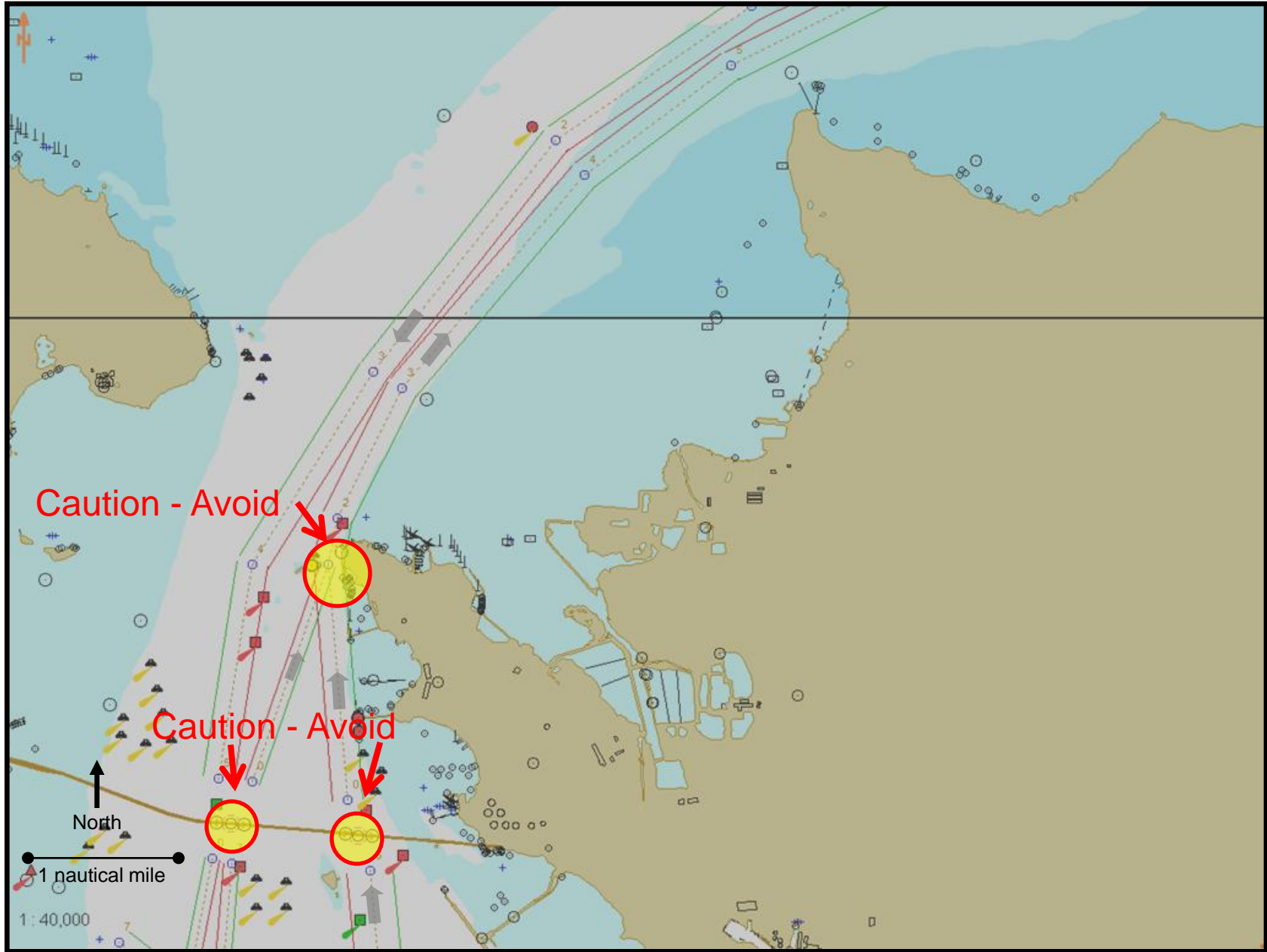
Central Bay and South San Francisco Bay



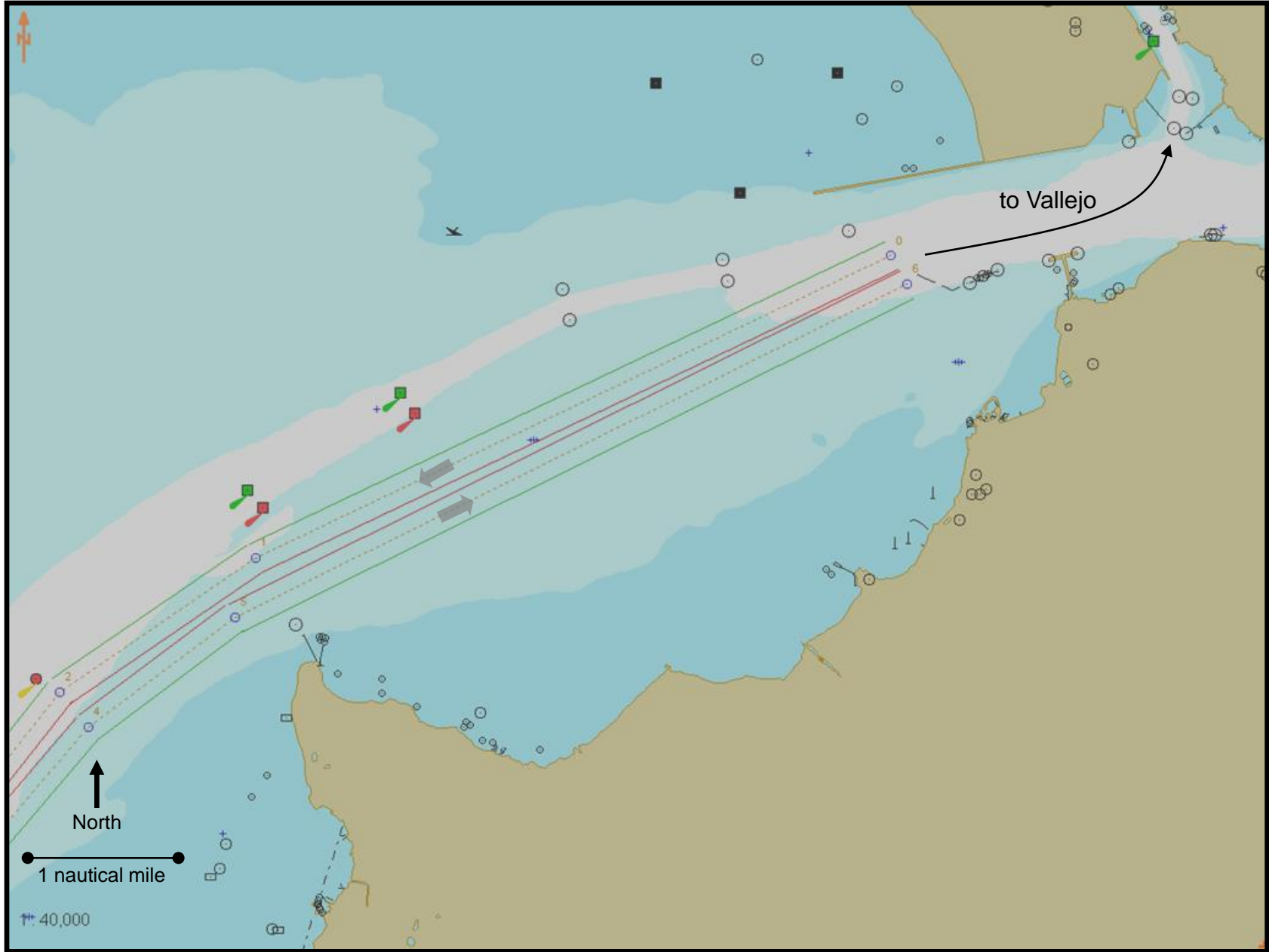
North Channel and Southampton Shoal Channel



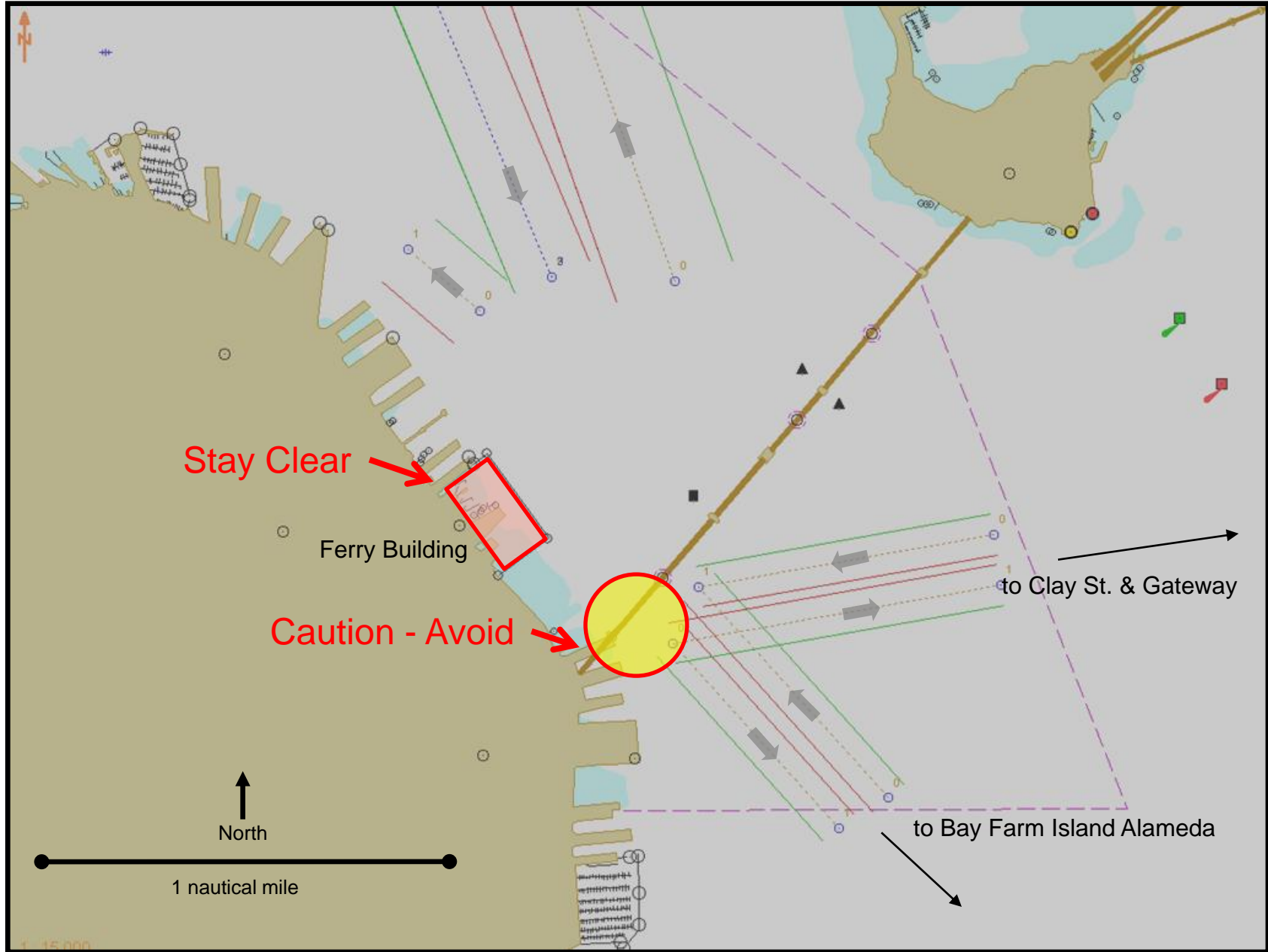
San Pablo Strait Channel



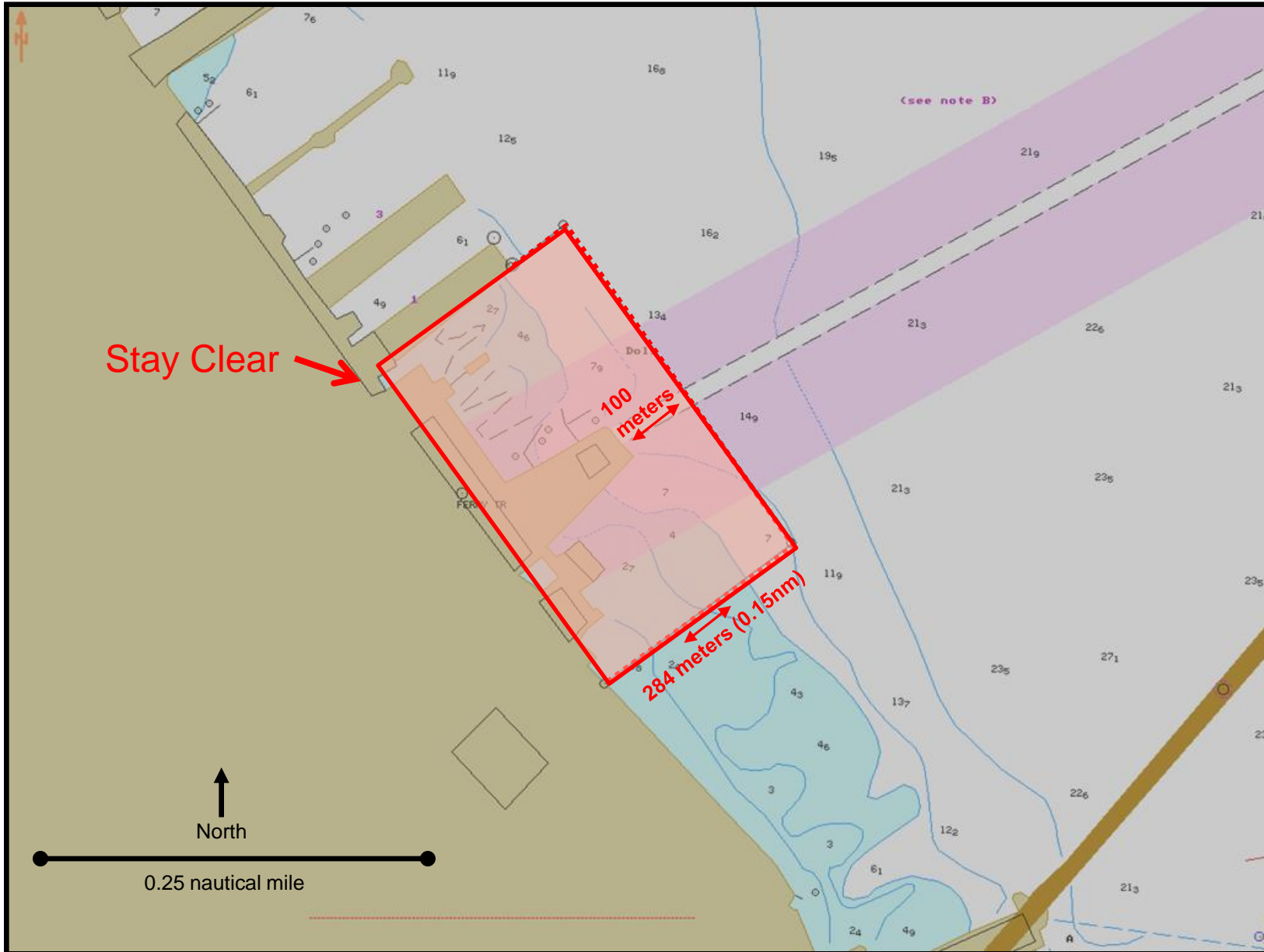
San Pablo Bay and Mare Island Strait



Ferry Building Approach/Departure Zone



Ferry Building Maneuvering Area



Source and Contact Information

Diagrams are screen print files from vector-based electronic nautical charts (ENCs).

Additional lines and labels were added to the screen print files for emphasis and clarity.

For more information contact:

Scott Humphrey

Training Coordinator

Sector San Francisco Vessel Traffic Service

Phone: +1 415 399 7444

Email: scott.humphrey@uscg.mil

Web: homeport.uscg.mil